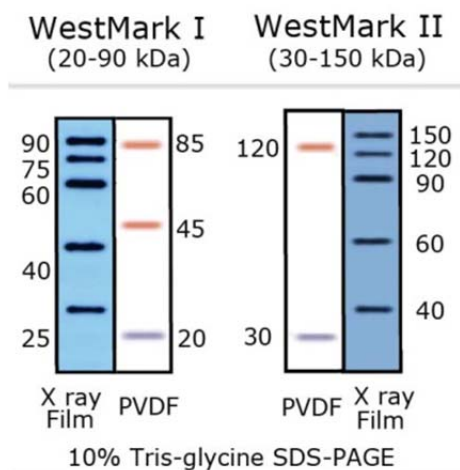


## WestMark™ Western Marker

WestMark™ protein markers make the Western Blot process much easier and produce publication ready images. They allow you:

- Monitor gel running with pre stained bands
- Estimate protein transfer efficiency
- Marker on you X-ray film
- Natural protein bands on X-ray film for accurate sizing
- React with secondary antibodies, no reduction in Western blot sensitivity
- No extra steps, no extra reagents
- Ready to load: no heating, no reducing reagent needed
- Western blot or daily use



Storage: -20°C

Buffer: 125mM Tris-HCl (pH 6.8), 10mM DTT, 17.4% Glycerol, 3% SDS, 0.01% phenol red

Usage: Ready to use, no need to heat or add reducing reagents. Load 3 to 5 ul each lane for mini gels. You may need to optimize loading amounts accordingly when starting a new lot of secondary antibody.

### Product Listing

Catalog Number	Volume (ul)	Applications (Lanes, mini gel)
WestMark1-12	60	12-20
WestMark1-36	180	36-60
WestMark2-12	60	12-20
WestMark2-36	180	36-60