

Bovine IgA(Immunoglobulin A) ELISA Kit

(Do not mix reagents of different batches and different product numbers in the kit, otherwise the kit will not work properly)

Catalogue No.: EB0035

Revision: V 3.0

Size: 48T/96T

Reactivity: Bovine

Range: 3.125-200ng/ml

Sensitivity: 1.875ng/ml

Application: For quantitative detection of IgA in serum, plasma, tissue homogenates and other biological fluids.

Storage: 2-8°C

Expiry Date: see kit label

Principle: Competitive

NOTE: FOR RESEARCH USE ONLY.

Kit Components

| No. | Item | Specifications(48T/96T) | Storage |
|------|-----------------------------------|-------------------------|---------------------------|
| E001 | ELISA Microplate(Dismountable) | 8×6/8×12 | 2-8°C/-20°C |
| E002 | Lyophilized Standard | 1vial/2vial | 2-8°C/-20°C |
| E039 | Sample Dilution Buffer | 10ml/20ml | 2-8°C |
| E003 | HRP-labeled Antigen(Concentrated) | 30ul/60ul | 2-8°C(Avoid Direct Light) |
| E040 | Antigen Dilution Buffer | 5ml/10ml | 2-8°C |
| E024 | TMB Substrate | 5ml/10ml | 2-8°C(Avoid Direct Light) |
| E026 | Stop Solution | 5ml/10ml | 2-8°C |
| E038 | Wash Buffer(25X) | 15ml/30ml | 2-8°C |
| E006 | Plate Sealer | 3/5pieces | |
| E007 | Product Description | 1copy | |

Wuhan Fine Biotech Co., Ltd.

1-2 Floor, BLD 22, Optics Valley Biopharmaceutical Accelerator, No.388 Gaoxin 2nd Road,
East Lake High Tech Development Zone, Wuhan, 430074, Hubei, China

Tel: (0086)027-87384275

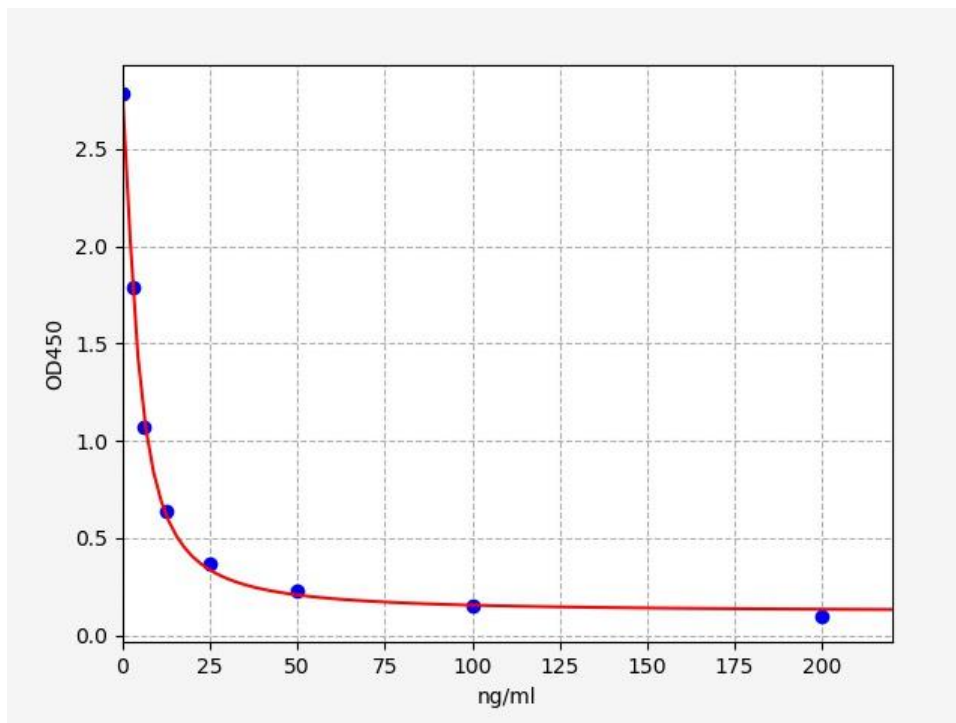
Fax: (0086)027-87800889

www.fn-test.com

Typical Data & Standard Curve

Results of a typical standard operation of a IgA ELISA Kit are listed below. This standard curve was generated at our lab for demonstration purpose only. Users shall obtain standard curve as per experiment by themselves. (N/A=not applicable)

| STD.(ng/ml) | OD-1 | OD-2 | Average |
|-------------|-------|-------|---------|
| 0 | 2.747 | 2.827 | 2.787 |
| 3.125 | 1.761 | 1.813 | 1.787 |
| 6.25 | 1.052 | 1.082 | 1.067 |
| 12.5 | 0.626 | 0.644 | 0.635 |
| 25 | 0.363 | 0.373 | 0.368 |
| 50 | 0.229 | 0.235 | 0.232 |
| 100 | 0.148 | 0.152 | 0.15 |
| 200 | 0.098 | 0.1 | 0.099 |



Wuhan Fine Biotech Co., Ltd.

1-2 Floor, BLD 22, Optics Valley Biopharmaceutical Accelerator, No.388 Gaoxin 2nd Road,
East Lake High Tech Development Zone, Wuhan, 430074, Hubei, China

Tel: (0086)027-87384275

Fax: (0086)027-87800889

www.fn-test.com

Specificity

This assay has high sensitivity and excellent specificity for detection of IgA. No significant cross-reactivity or interference between IgA and analogues was observed.

Note: Limited by current skills and knowledge, it is difficult for us to complete the cross-reactivity detection between IgA and all the analogues, therefore, cross reaction may still exist.

Recovery

Matrices listed below were spiked with certain level of IgA and the recovery rates were calculated by comparing the measured value to the expected amount of IgA in samples.

| Matrix | Recovery Range (%) | Average (%) |
|---------------------|--------------------|-------------|
| Serum(n=5) | 86-100 | 92 |
| EDTA Plasma(n=5) | 85-103 | 95 |
| Heparin Plasma(n=5) | 89-99 | 93 |

Linearity

The linearity of the kit was assayed by testing samples spiked with appropriate concentration of IgA and their serial dilutions. The results were demonstrated by percentage of calculated concentration to the expectation.

| Sample | 1:2 | 1:4 | 1:8 |
|---------------------|--------|---------|---------|
| Serum(n=5) | 88-95% | 95-105% | 86-101% |
| EDTA Plasma(n=5) | 82-89% | 85-95% | 86-98% |
| Heparin Plasma(n=5) | 90-99% | 82-96% | 80-89% |

Precision

Intra-Assay: CV<8%

Inter-Assay: CV<10%

Stability

The stability of ELISA kit is determined by the loss rate of activity. The loss rate of this kit is less than 10% within the expiration date under appropriate storage condition.

| | | |
|---------------|------------------|--------------------|
| Standard(n=5) | 37°C for 1 month | 2-8°C for 6 months |
|---------------|------------------|--------------------|

Wuhan Fine Biotech Co., Ltd.

1-2 Floor, BLD 22, Optics Valley Biopharmaceutical Accelerator, No.388 Gaoxin 2nd Road,
East Lake High Tech Development Zone, Wuhan, 430074, Hubei, China

Tel: (0086)027-87384275

Fax: (0086)027-87800889

www.fn-test.com

| | | |
|-------------|----|--------|
| Average (%) | 80 | 95-100 |
|-------------|----|--------|

To minimize extra influence on performance, operation procedures and lab conditions, especially room temperature, air humidity, incubator temperature should be strictly controlled. It is strongly suggested that the same operator performs the whole assay from the beginning to the end.

Operation Procedure

[Elisa Kits Operation Guide & Targeted control of TMB coloring](#)

<https://www.fn-test.com/videos/elisa-test/> & www.fn-test.com/category/knowledge-share/



[Principle of the Assay](#)

This kit was based on Competitive-ELISA detection method. The microtiter plate provided in this kit has been pre-coated with antibody. During the reaction, target in the sample or standard competes with a fixed amount of HRP-Antigen. Excess conjugate and unbound sample or standard are washed from the plate. Then TMB substrate solution is added to each well. The enzyme-substrate reaction is terminated by the addition of a sulfuric acid solution and the color change is measured spectrophotometrically at a wavelength of 450nm. The concentration of target in the samples is then determined by comparing the OD of the samples to the standard curve.

[Precautions](#)

1. To inspect the validity of experiment operation and the appropriateness of sample dilution proportion, pilot experiment using standards and a small number of samples is recommended.
2. After opening and before using, keep plate dry.
3. Before using the kit, spin tubes and bring down all components to the bottom of tubes.
4. Storage TMB reagents avoid light.
5. Washing process is very important, not fully wash easily cause a false positive and high background.
6. Duplicate well assay is recommended for both standard and sample testing.

Wuhan Fine Biotech Co., Ltd.

1-2 Floor, BLD 22, Optics Valley Biopharmaceutical Accelerator, No.388 Gaoxin 2nd Road,
East Lake High Tech Development Zone, Wuhan, 430074, Hubei, China

Tel: (0086)027-87384275

Fax: (0086)027-87800889

www.fn-test.com

7. Don't let microplate dry at the assay, for dry plate will inactivate active components on plate.
8. Don't reuse tips and tubes to avoid cross contamination.
9. Please do not mix the reagents in different kits of our company. Do not mix reagents from other manufacturers.
10. To ensure accurate results, proper adhesion of plate sealers during incubation steps is necessary.

Material Required but Not Supplied

1. Microplate reader (wavelength:450nm)
2. 37°C incubator
3. Automated plate washer
4. Precision single and multi-channel pipette and disposable tips
5. Clean tubes and Eppendorf tubes
6. Deionized or distilled water

Washing

Manual: Discard the solution in the plate without touching the side walls. Clap the plate on absorbent filter papers or other absorbent material. Fill each well completely with 350ul wash buffer and soak for 1 to 2 minutes, then aspirate contents from the plate, and clap the plate on absorbent filter papers or other absorbent material.

Automatic: Aspirate all wells, and then wash plate with 350ul wash buffer. After the final wash, invert plate, and clap the plate on absorbent filter papers or other absorbent material. It is recommended that the washer shall be set for soaking 1 minute. (**Note:** set the height of the needles; be sure the fluid can be sipped up completely)

Sample Collection and Storage (universal)

<https://www.fn-test.com/download/>



Please refer to the following link or qr code for detailed sample preparation guidelines

- **Serum:** Place whole blood sample at room temperature for 2 hours or put it at 2-8°C overnight and centrifugation for 20 minutes at approximately 1000×g. Collect the supernatant and carry out the assay immediately. Blood collection tubes should be disposable, non-pyrogenic, and non-endotoxin.
- **Plasma:** Collect plasma using EDTA-Na₂ or heparin as an anticoagulant. Centrifuge samples for 15 minutes at 1000×g at 2-8°C within 30 minutes of collection. Collect the supernatant and carry out the assay immediately. Avoid hemolysis, high cholesterol samples.
- **Tissue Homogenates:** As hemolysis blood has relation to assay result, it is necessary to remove residual blood by washing tissue with pre-cooling PBS buffer (0.01M, pH=7.4). Mince tissue after weighing it and get it homogenized in

Wuhan Fine Biotech Co., Ltd.

1-2 Floor, BLD 22, Optics Valley Biopharmaceutical Accelerator, No.388 Gaoxin 2nd Road,
East Lake High Tech Development Zone, Wuhan, 430074, Hubei, China

Tel: (0086)027-87384275

Fax: (0086)027-87800889

www.fn-test.com

PBS (the volume depends on the weight of the tissue. Normal, 9mL PBS would be appropriate to 1 gram tissue pieces. Some protease inhibitors are recommended to add into the PBS) with a glass homogenizer on ice. To further break the cells, you can sonicate the suspension with an ultrasonic cell disrupter or subject it to freeze-thaw cycles. The homogenates are then centrifuged for 5 minutes at 5000×g to get the supernatant. The total protein concentration was determined by BCA kit and the total protein concentration of each well sample should not exceed 0.3mg.

- **Adherent and Suspension Cell Culture:** Use three T25 flasks or one T75 flask for cell culture, the number of cells (1x10⁷);

1. Suspension cell: centrifuge at 2500 rpm at 2-8°C for 5 minutes; collect clarified cell culture supernatant;

2. Adherent cell: collect supernatant directly; centrifuge at 2500 rpm at 2-8°C for 5 minutes; collect clarified cell culture supernatant for immediate detection or store it separately at -80°C.

- **Cell Lysate Preparation:** Two types of cell lysates are specified below.

1. Suspension Cell Lysate : Centrifuge at 2500 rpm at 2-8°C for 5 minutes; Then add pre-cooling PBS into collected cell and gently mix. Recollect cell by repeating centrifugation. Add 0.5-1ml RIPA lysis buffer (NP-40 lysis buffer or Triton X-100 surfactant is not recommended due to the interfering with antigen-antibody reaction). Add suitable protease inhibitor (e.g. PMSF, working concentration: 1mmol/L). Lyse the cell on ice for 30min-1h. During lysate process, use the tip for pipetting or intermittently shake the centrifugal tube to completely lyse the protein. Alternatively, cells are subject to fragmentation by ultrasonic cell disruptor (300W, 3~5 s/time, 30s intervals, four-five times) or ultrasonic generator (14 μ m for 30s). At the end of lysate or ultrasonic disruption, centrifuge at 10000rpm at 2-8°C for 10 minutes. Then, the supernatant is added into EP tube and stored at -80°C.

2. Adherent Cell Lysate: Absorb supernatant and add pre-cooling PBS once. Then, add 0.5-1ml RIPA lysis buffer (NP-40 lysis buffer or Triton X-100 surfactant is not recommended due to the interfering with antigen-antibody reaction). Add the suitable protease inhibitor (e.g. PMSF, working concentration: 1mmol/L). Scrape adherent cell gently with a cell scraper. Add the cell suspension into centrifugal tube. Lyse the cell on ice for 30min-1h. During lysate process, use the tip for pipetting or intermittently shake the centrifugal tube to completely lyse the protein. Alternatively, cells are subject to fragmentation by ultrasonic generator (14 μ m for 30s) or ultrasonic cell disruptor (300W, 3~5 s/time, 30s intervals, four-five times). At the end of lysate/ultrasonic disruption, centrifuge at 10000rpm at 2-8°C for 10 minutes. Then, the supernatant is added into EP tube and stored at -80°C.

- **Other Biological Fluids:** Centrifuge samples for 20 minutes at 1000×g at 2-8°C. Collect supernatant and carry out the assay immediately.

Note: Samples used within 5 days can be stored at 2-8°C; otherwise, they must be stored at -20°C or -80°C or liquid nitrogen to avoid loss of biological activity and contamination. Avoid multiple freeze-thaw cycles. Hemolytic samples are not suitable for this test.

Sample Dilution

The user should estimate the concentration of target protein in the test sample, and select a proper dilution factor to make the diluted target protein concentration fall in the optimal detection range of the kit. Dilute the sample with the provided dilution buffer, and several trials may be necessary. The test sample must be well mixed with the dilution buffer. And also standard curves and sample should be making in pre-experiment. If samples with very high concentrations, dilute samples with PBS first and then dilute the samples with Sample Dilution.

Wuhan Fine Biotech Co., Ltd.

1-2 Floor, BLD 22, Optics Valley Biopharmaceutical Accelerator, No.388 Gaoxin 2nd Road,
East Lake High Tech Development Zone, Wuhan, 430074, Hubei, China

Tel: (0086)027-87384275

Fax: (0086)027-87800889

www.fn-test.com

Reagent Preparation and Storage

Bring all reagents and samples to room temperature for 20 minutes before use.

1, Wash Buffer:

If crystals have formed in the concentrate, you can warm it with 40°C water bath (Heating temperature should not exceed 50°C) and mix it gently until the crystals have completely been dissolved. The solution should be cooled to room temperature before use.

Dilute 30ml (15ml for 48T) Concentrated Wash Buffer to 750ml (375ml for 48T) Wash Buffer with deionized or distilled water (The recommended resistivity of deionized or distilled water is 18MΩ). Put unused solution back at 2-8°C.

2. HRP-labeled Antigen Working Solution:

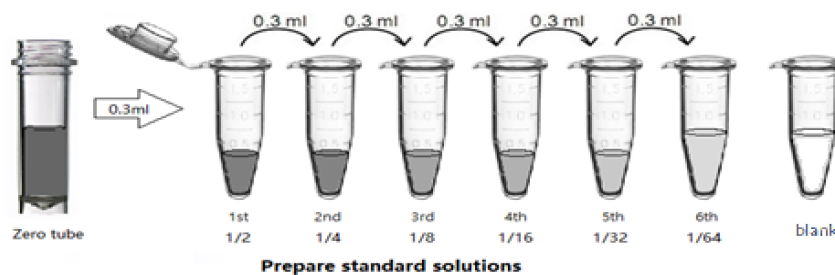
Dilute the HRP-labeled Antigen with Antigen Dilution Buffer at 1:100 and mix them thoroughly. (i.e. Add 1ul of HRP-labeled Antigen into 99ul of Antigen Dilution Buffer.)

3, Standards:

1). Add 0.5 ml Sample Dilution Buffer into one Standard tube (labeled as zero tube), keep the tube at room temperature for 10 minutes and mix them thoroughly.

Note: If the standard tube concentration higher than the range of the kit , please dilute it and labeled as zero tube.

2). Label 7 EP tubes with 1/2, 1/4, 1/8, 1/16, 1/32, 1/64 and blank respectively. Add 0.3ml of the Sample Dilution Buffer into each tube. Add 0.3ml of the above Standard solution (from zero tube) into 1st tube and mix them thoroughly. Transfer 0.3ml from 1st tube to 2nd tube and mix them thoroughly. Transfer 0.3ml from 2nd tube to 3rd tube and mix them thoroughly, and so on. Sample Dilution Buffer was used for the blank control.



Note: It is best to use Standard Solutions within 2 hours.

4, Preparation of Standard/Sample/HRP-Antigen compound:

Prepare it within 30 minutes before experiment.

1) When samples and standards are not tested repeatedly: 1. Take 55ul prepared standard of each gradient and 55ul HRP-labeled antigen working Solution and mix them well in EP tube for later use. 2. Take 55ul diluted sample and 55ul HRP-labeled antigen working Solution and mix well in EP tube for later use.

2) When the sample and standard are tested in duplicate: 1. Take 110ul prepared standard of each gradient and 110ul HRP-labeled antigen working Solution and mix them well in EP tube for later use. 2. Take 110ul diluted sample and 110ul HRP-labeled antigen working Solution and mix well in EP tube for later use.

Assay Procedure

When diluting samples and reagents, they must be mixed completely and evenly. Before adding TMB into wells, equilibrate TMB Substrate for 30 minutes at 37°C. It is recommended to plot a standard curve for each test.

Wuhan Fine Biotech Co., Ltd.

1-2 Floor, BLD 22, Optics Valley Biopharmaceutical Accelerator, No.388 Gaoxin 2nd Road,
East Lake High Tech Development Zone, Wuhan, 430074, Hubei, China

Tel: (0086)027-87384275

Fax: (0086)027-87800889

www.fn-test.com

1. Set standard and test samples wells on the pre-coated plate respectively, and then, records their positions. It is recommended to measure each standard and sample in duplicate. **Wash plate 2 times before adding standard and sample wells!**
2. Add 100ul **Standard/Sample/HRP-Antigen compound** into each well and incubate for 30 minutes at 37°C. (Solutions are added to the bottom of microplate well, avoiding inside wall touching and foaming as much as you can.)
3. **Wash:** Remove the cover, and wash plate 5 times with Wash Buffer, and let the wash buffer stay in the wells for 1 minute each time. After the last wash, remove any remaining Wash Buffer by aspirating or decanting.
4. **TMB Substrate:** Add 90ul TMB Substrate into each well, cover the plate and incubate at 37°C in dark within 10-20 minutes. (**Before adding TMB into wells, equilibrate TMB Substrate for 30 minutes at 37°C. It is recommended to plot a standard curve for each test.**) (**Note:** The reaction time can be shortened or extended according to the actual color change, but not more than 30 minutes. You can terminate the reaction when apparent gradient appeared in standard wells.)
5. **Stop:** Add 50ul Stop Solution into each well. The color will turn yellow immediately. The adding order of Stop Solution should be as the same as the TMB Substrate Solution.
6. **OD Measurement:** Read the O.D. absorbance at 450nm in Microplate Reader immediately after adding the stop solution.

Regarding calculation, the standard curve can be plotted as the O.D.450 of each standard solution (Y) vs. the respective concentration of the standard solution (X). The target concentration of the samples can be interpolated from the standard curve. It is recommended to use some professional software to do this calculation, such as **Curve Expert 1.3 or 1.4.**

Note: If the samples measured were diluted, multiply the dilution factor to the concentrations from interpolation to obtain the concentration before dilution.

Summary

Step 1: Wash plate 2 times before adding Standard and Sample wells!

Step 2: Add 100ul **Standard/Sample/HRP-Antigen compound** into each well and incubate for 30 minutes at 37°C.

Wash step: Aspirate and wash plates 5 times.

Step 3: Add 90ul TMB Substrate Solution. Incubate 10-20 minutes at 37°C.

Step 4: Add 50ul Stop Solution. Read at 450nm immediately and calculation.

Wuhan Fine Biotech Co., Ltd.

1-2 Floor, BLD 22, Optics Valley Biopharmaceutical Accelerator, No.388 Gaoxin 2nd Road,
East Lake High Tech Development Zone, Wuhan, 430074, Hubei, China

Tel: (0086)027-87384275

Fax: (0086)027-87800889

www.fn-test.com